

# 951HR-12-3/8

HAFNER

Rotačná spojka Priamy tvar - kuželový samotesniaci závit - RPM 900



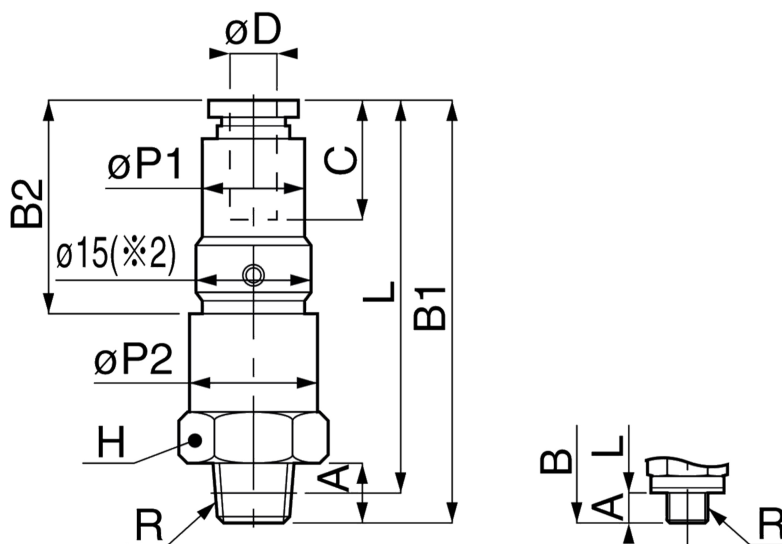
## productDataPdf.propertiesHeader

|                                  |                         |
|----------------------------------|-------------------------|
| Prevedenie                       | Závitová                |
| Prípoj                           | R 3/8"                  |
| Materiál tesnenia                | NBR                     |
| Prevedenie                       | Rýchlospojka (závitová) |
| Menovitý tlak                    | 0...10 bar              |
| Prípoj   vonkajší priemer hadice | Ø12                     |
| Max. otáčky                      | 900 rpm                 |

# 951HR-12-3/8

HAFNER

Rotačná spojka Priamy tvar - kuželový samotesniaci závit - RPM 900



| Typ          | Priemer hadice | Prípoj | A  | B1   | B2   | L    | P1 | P2   | C    | H  |
|--------------|----------------|--------|----|------|------|------|----|------|------|----|
| 951HR-4-M5   | 4              | M5     | 3  | 43,2 | 22,7 | 40,2 | 11 | 11,6 | 14,9 | 12 |
| 951HR-4-1/8  | 4              | R 1/8" | 8  | 47,7 | 22,7 | 43,7 | 11 | 11,6 | 14,9 | 12 |
| 951HR-6-1/8  | 6              | R 1/8" | 8  | 54,8 | 26,8 | 50,8 | 13 | 16,6 | 17   | 17 |
| 951HR-6-1/4  | 6              | R 1/4" | 11 | 57,8 | 26,8 | 51,7 | 13 | 16,6 | 17   | 17 |
| 951HR-8-1/8  | 8              | R 1/8" | 8  | 58,1 | 30,1 | 54,1 | 15 | 16,6 | 18,2 | 17 |
| 951HR-8-1/4  | 8              | R 1/4" | 11 | 61,1 | 30,1 | 55,1 | 15 | 16,6 | 18,2 | 17 |
| 951HR-10-3/8 | 10             | R 3/8" | 12 | 67,9 | 32,4 | 61,6 | 20 | 23,6 | 20,7 | 24 |
| 951HR-10-1/2 | 10             | R 1/2" | 15 | 70,9 | 32,4 | 62,7 | 20 | 23,6 | 20,7 | 24 |
| 951HR-12-3/8 | 12             | R 3/8" | 12 | 70,5 | 35   | 64,2 | 21 | 23,6 | 23,4 | 24 |
| 951HR-12-1/2 | 12             | R 1/2" | 15 | 73,5 | 35   | 65,3 | 21 | 23,6 | 23,4 | 24 |